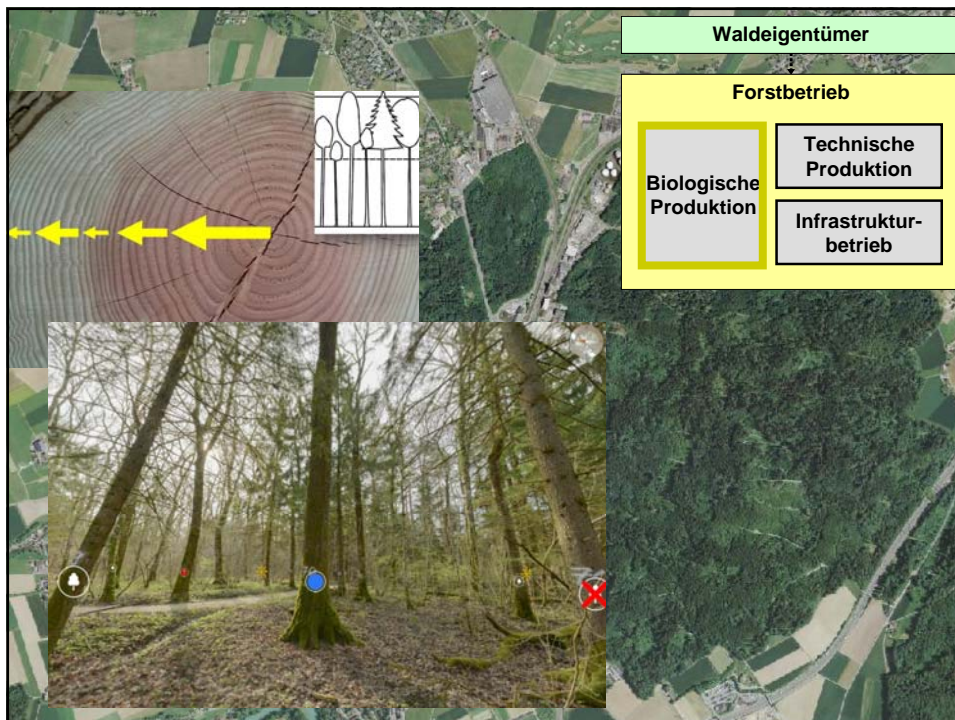
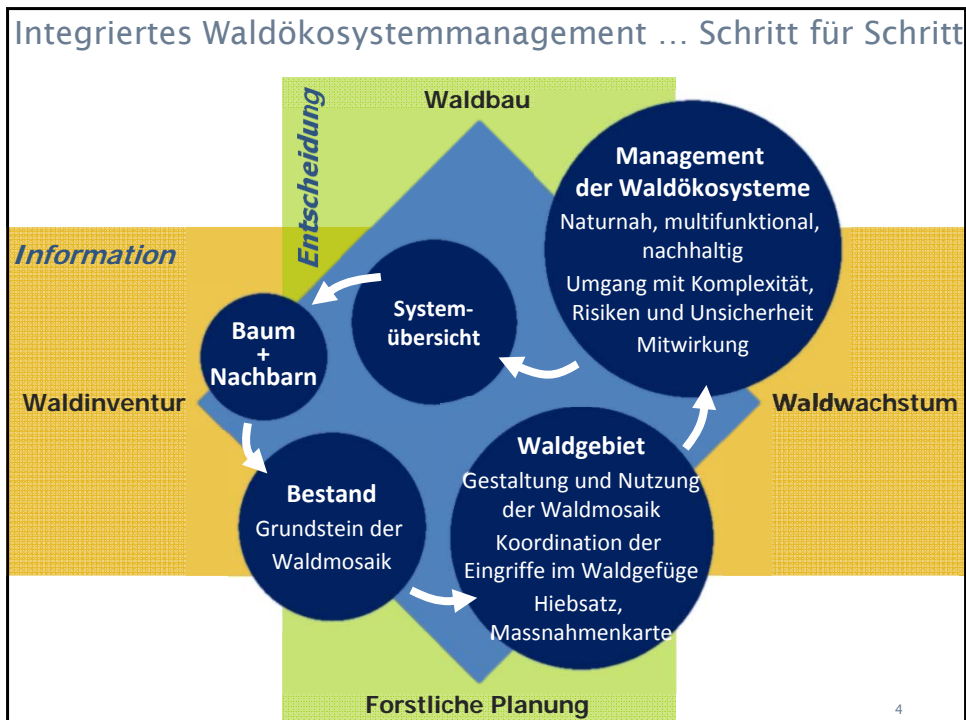
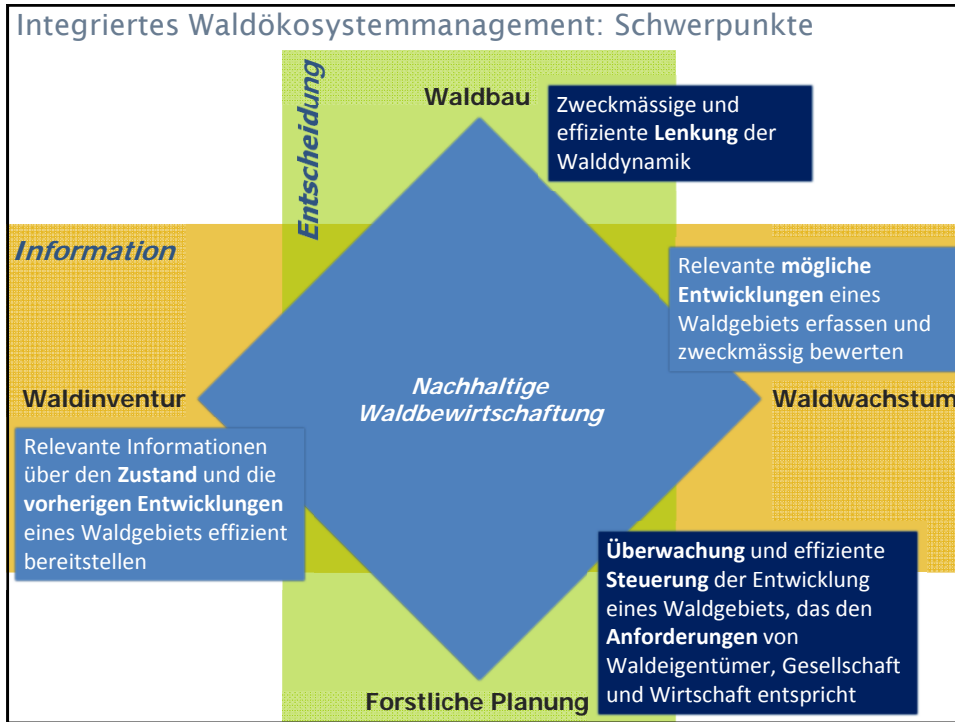


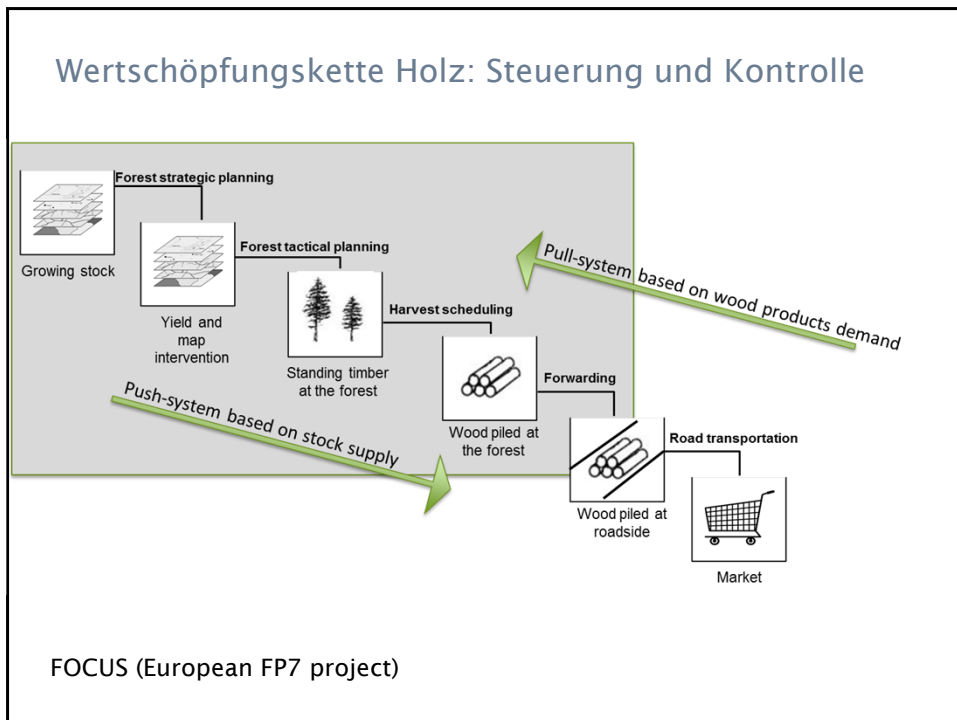


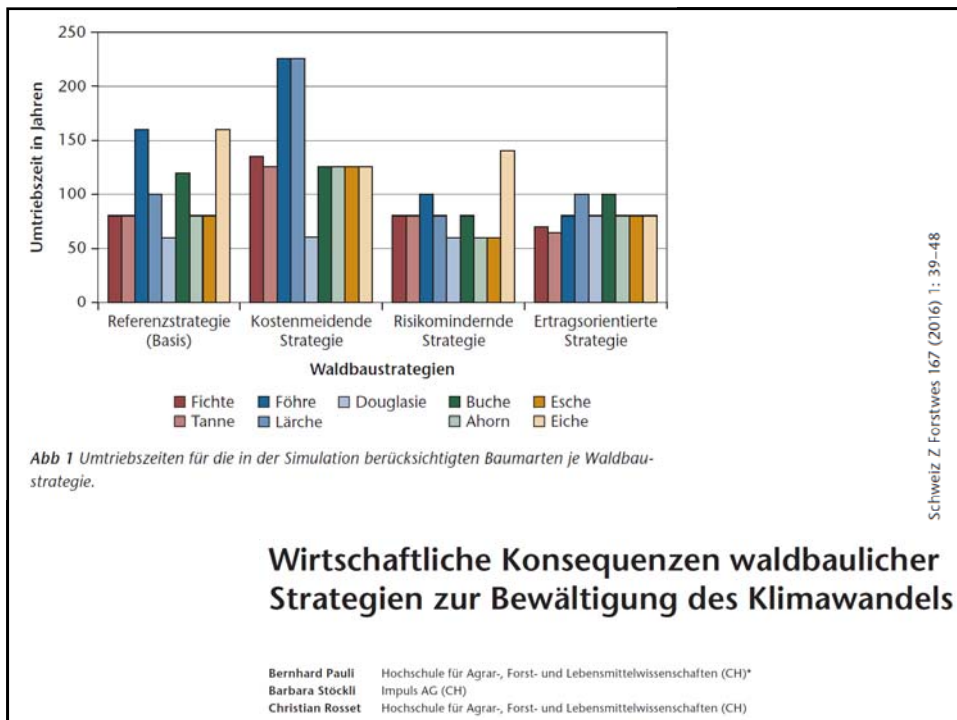
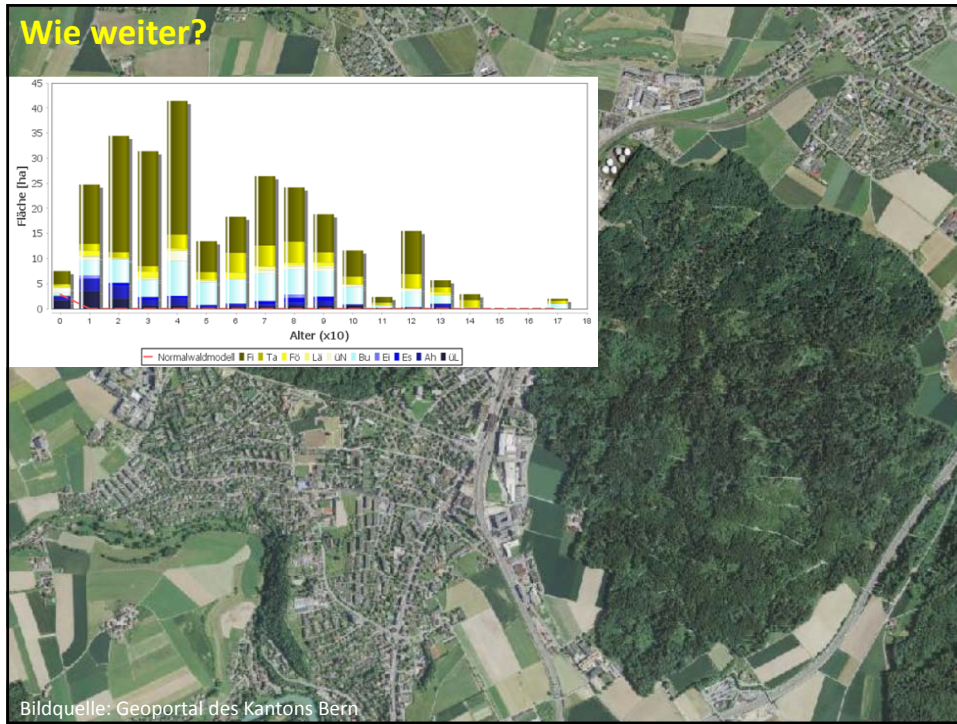
**Waldökonomisches Seminar 2017**  
Koreferat > Forstbetriebsplanung unter Risikoaspekten –  
Strategien auf Basis ökonomischer Modelle - Fabian Härtl

Münchenwiler/ 08.11.2016  
> christian.rosset@bfh.ch









### **Future orientation and planning in forestry: a comparison of forest managers' planning horizons in Germany and the Netherlands**

Marjanke A. Hoogstra · Heiner Schanz

#### Discussion and conclusion ...

- ▶ ... the “**doctrine of the long run**” that plays an important role in the forestry culture seems certain to fall in the realm of ideological **myth making**.
- ▶ In contemporary Western societies **changes happen so fast** that the **future** is taken into the here and now. It **loses its meaning**, in the sense that people are unable to think about the long-term, much less plan for it.
- ▶ Thinking is aimed “at the extended present, or the immediate future” and “plans [...] **can be seen as no more than a short-term projection of the present into the immediate future**, or, indeed as an orientation to the extended present”

